

Peel River Fish Study

The Peel River Fish Study

- ✦ 5-year study
 - Initiated in 1998
 - Due to concerns of communities in the Mackenzie Delta

- ✦ Goals of the study:
 - Collect species biological information
 - Record timing of spawning migrations

What was done in 2002?

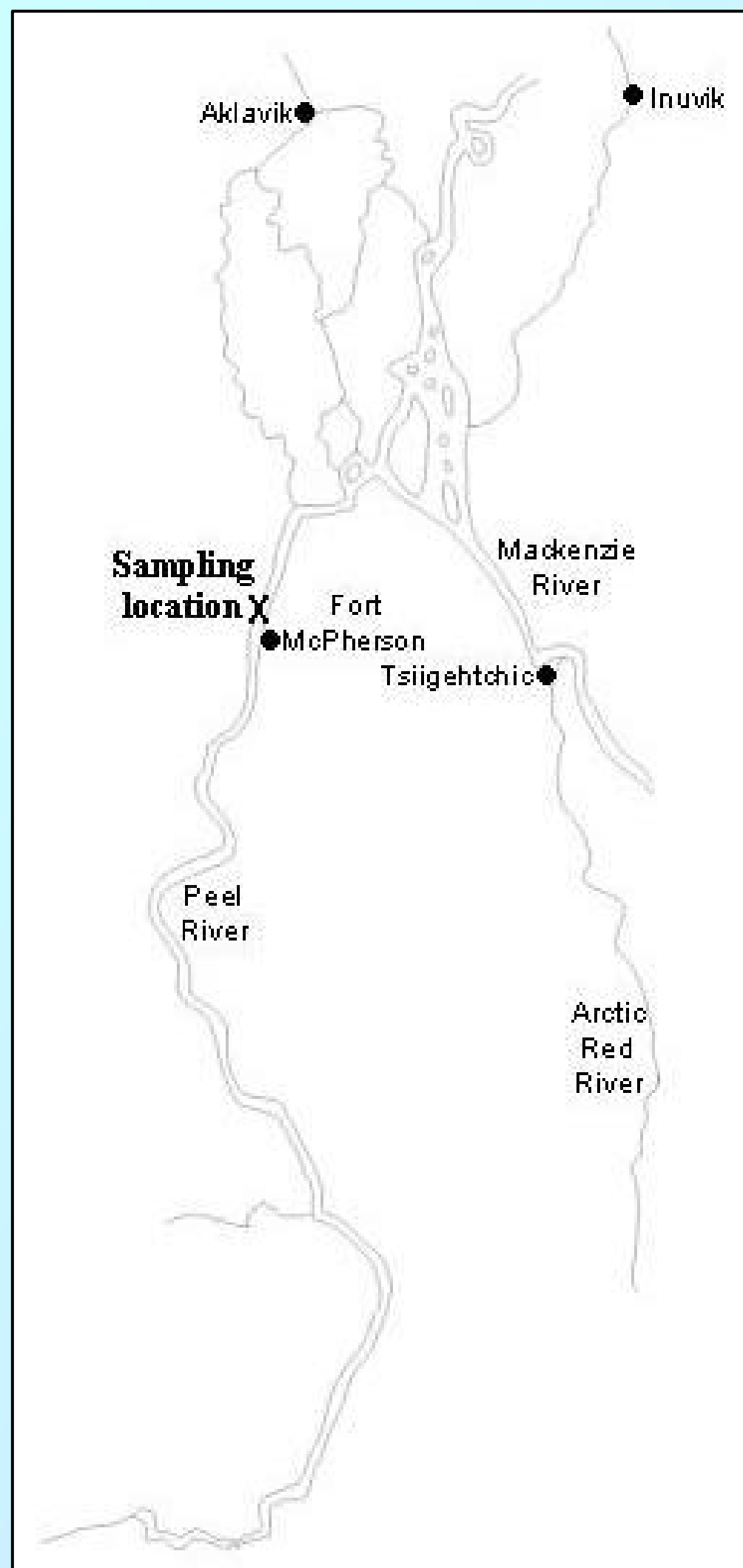
- ✦ Community fish-monitor caught & sampled fish
- ✦ Field study from July 15th - November 15th
- ✦ 5 community youth participated in the study



Fish-monitor, Fred Koe, labeling fish

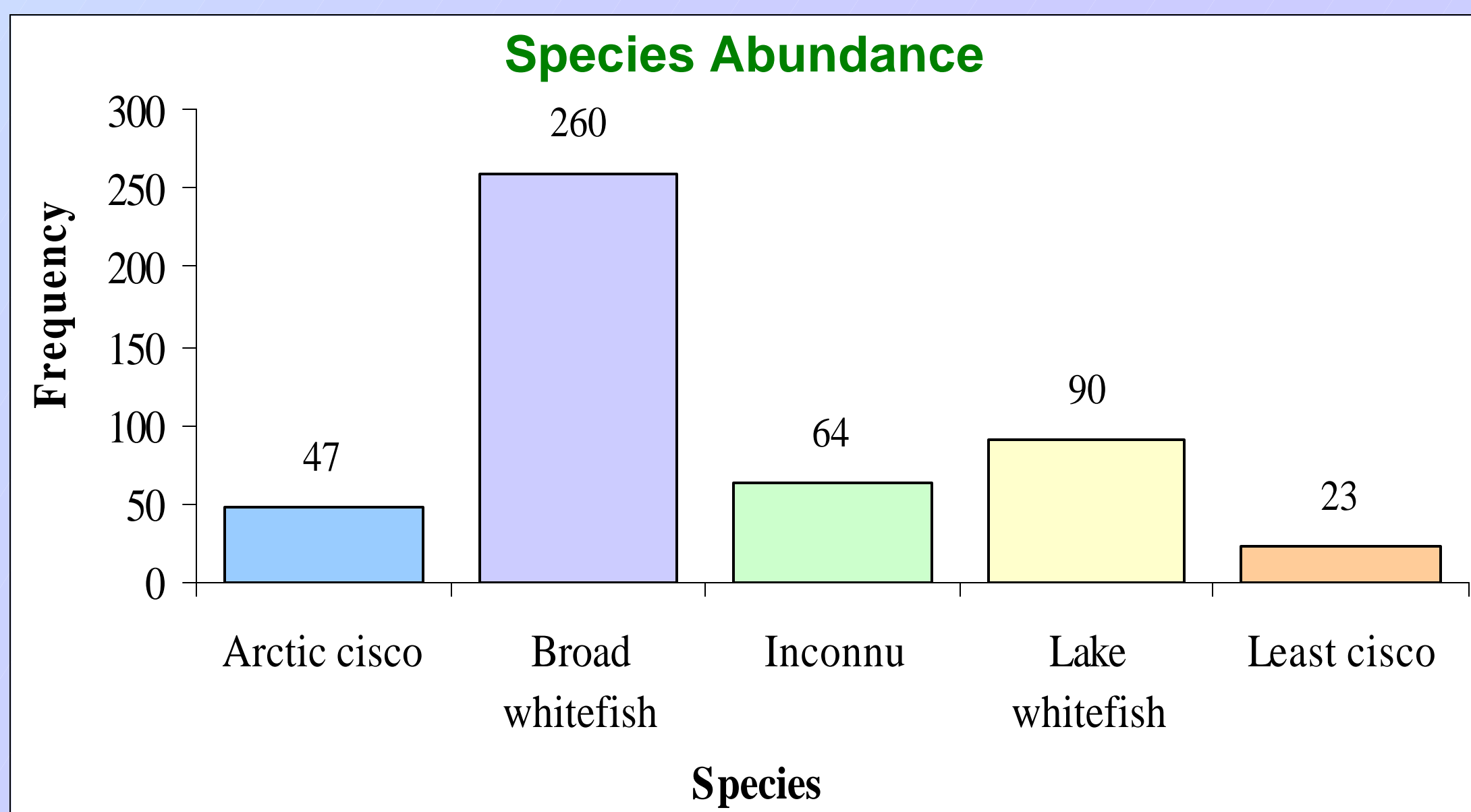


Gwich'in youth, James William Wilson & Robbie Itsy, sampling fish for the study



Results from 2002

Species size (cm)			
Species	Min	Max	Mean
Arctic cisco	26	60	36
Broad whitefish	25	63	51
Inconnu	49	91	75
Lake whitefish	24	57	42
Least cisco	21	33	27

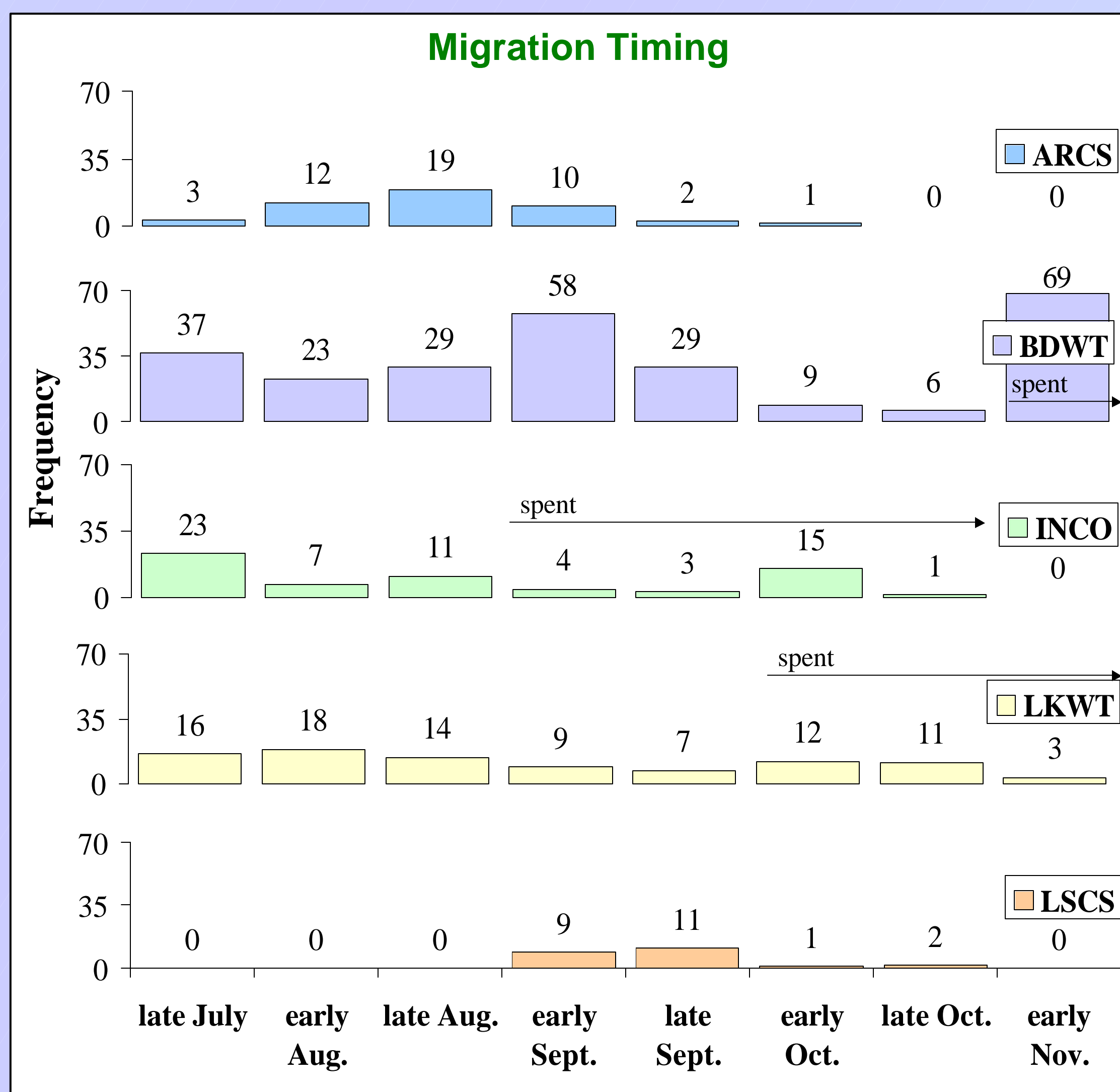


Sex Ratio			
Species	# Female	# Male	?
Arctic cisco	19 (40%)	28 (60%)	
Broad whitefish	118 (45%)	142 (55%)	
Inconnu	31 (48%)	32 (50%)	1
Lake whitefish	45 (50%)	45 (50%)	
Least cisco	2 (9%)	18 (78%)	3

- ✦ Most Arctic cisco caught in August & early September
- ✦ All arctic cisco caught in pre-spawning condition (with eggs)

- ✦ Pre-spawning inconnu caught from late July - late August
- ✦ Spent (no eggs left) inconnu caught mostly in September & early October

- ✦ Most least cisco caught in September
- ✦ All were in pre-spawning condition



- ✦ Pre-spawning broad whitefish caught from late July - late October
- ✦ Spent (no eggs left) broad whitefish caught in November

- ✦ Pre-spawning lake whitefish caught from late July - late September
- ✦ Spent lake whitefish caught early October - November

NOTE: All information on spawning condition refers to female fish only.

What's next for 2003?

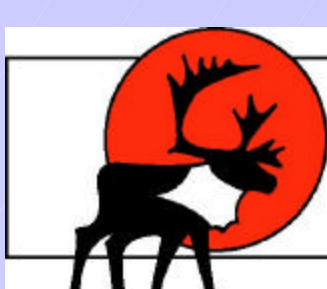
- ✦ Determine age of all fish
- ✦ Determine fecundity of all fish
- ✦ Analyse data from the 5-year study
- ✦ Write a final report

Acknowledgements

- We thank the following organizations for their contributions to this project:
- ✦ NWT Cumulative Impact Monitoring Program. DIAND
 - ✦ Polar Continental Shelf Project. NRCAN
 - ✦ Tetlit Gwich'in Renewable Resource Council

Fish Names

Arctic cisco = herring, *Coregonus autumnalis*
 Broad whitefish = whitefish, *Coregonus nasus*
 Inconnu = coney, *Stenodus leucichthyes*
 Lake whitefish = crookedback, *Coregonus clupeaformis*
 Least cisco = herring, *Coregonus sardinella*
 Northern pike = jackfish, *Esox lucius*



Gwich'in Renewable Resource Board
 P.O. Box 2440, Inuvik, NT, X0E 0T0
 Telephone: 867-777-3429 • Fax: 867-777-4260
<http://www.grrb.nt.ca>

For further information contact:
 Fisheries/Forestry Biologist, GRRB