

Figure 21. 2007 Regional Science Fair. Project by Mark Meulenbroek. *Statistical Outliers?* addressed an actual example of outlier data from Bosworth Creek. Calcium is one of two metals that exhibit significant changes in abundance at one site. Mark demonstrated that the relative abundance of other metals can be more easily understood by removing the outliers and addressing them separately. Since the relative abundance of other metals are unaffected, these data may indicate actual contamination of the site. Follow-up sampling will hopefully resolved this issue.

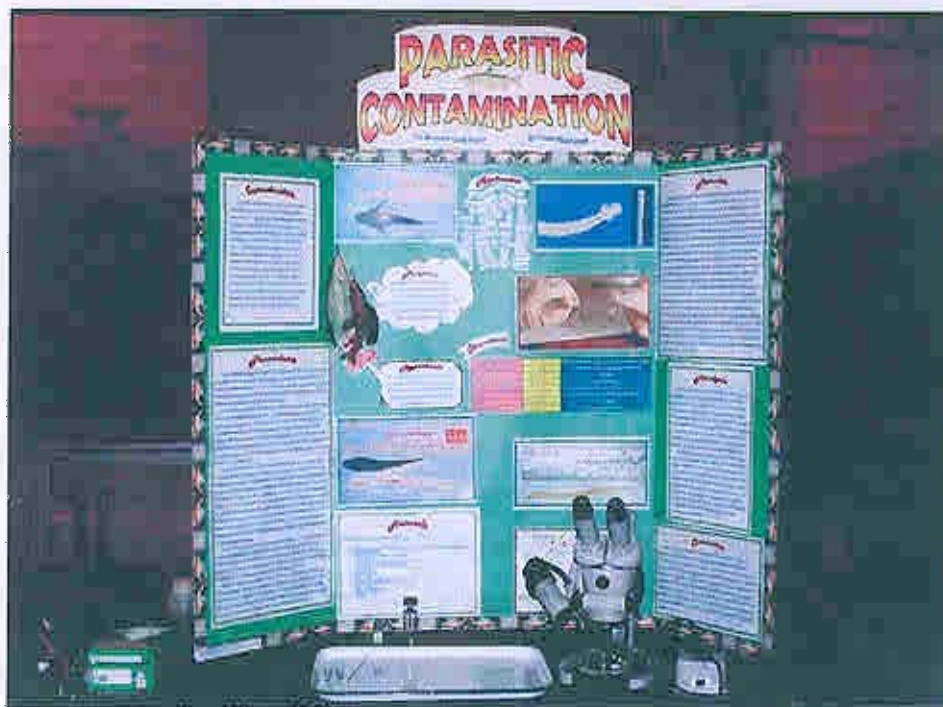
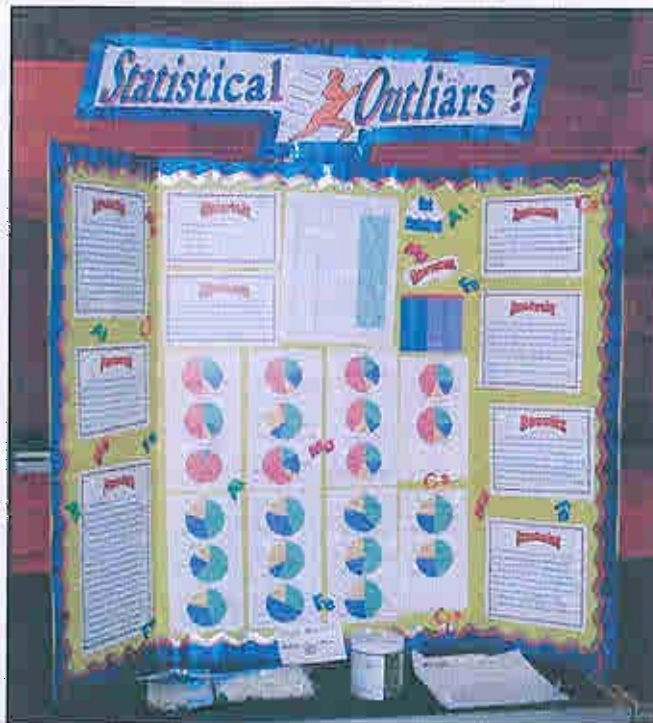


Figure 22. 2007 Regional Science Fair. Project by Yvonne Meulenbroek. *Parasitic Contamination* demonstrated actual laboratory procedures with fishes and parasites from Bosworth Creek. Her project performed analyses and drew conclusions based on her results using the scientific method. Yvonne will enter this project in the Canada-Wide Science Fair in Turo, Nova Scotia, May 2007.